

## Threaded spindles



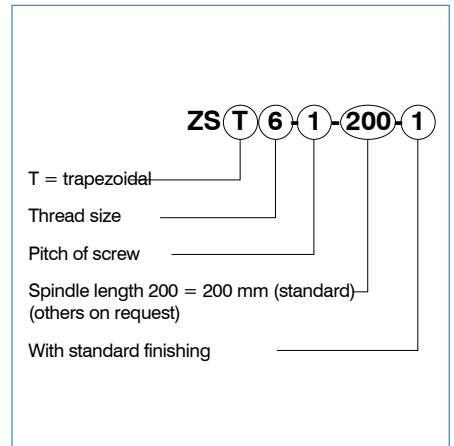
### Fast and economic for the complete module

To realize easy and fast linear movements with a stepper motor, we offer the matching thread spindles for every linear actuator or linear motor. This reduces not only the order and delivery costs, but at the same time increases the observation of the specified tolerance.

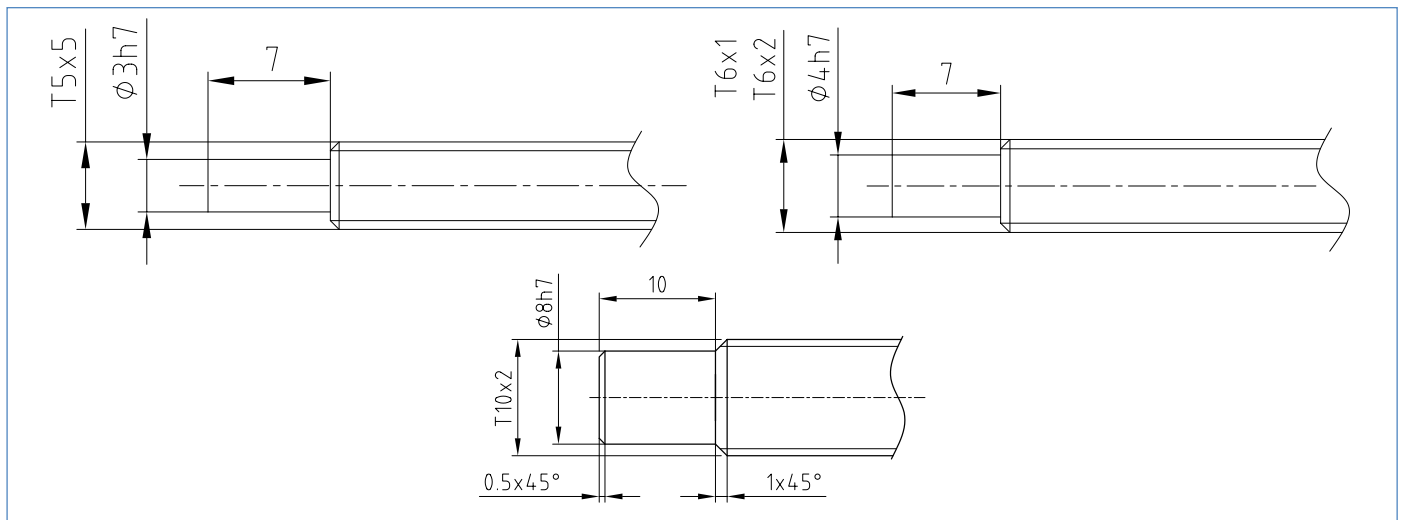
### Lubrication:

The lubrication intervals depend on external operating conditions. Bronze nuts must be regularly lubricated (e.g. Klüber - Microlube GBUY131)

### Order identifier



### Standard finishing



### Trapezoidal spindles p = 1 - 5 mm

The pitch of p = 1, 2 and 5 mm offers an extended range of applications, where larger strokes are conveyed in a minimum of time.

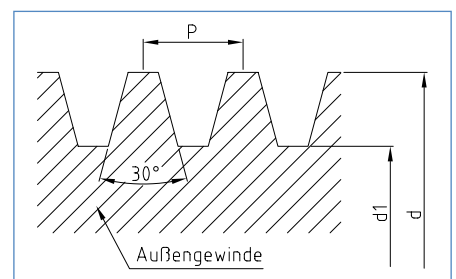
### Spindle material

Material no.: 1.4021 = Rust-free (not acid and saltwater resistant)  
all trapezoidal threaded spindle except for T6X2 ( 1.4401)

### Tensile strength

760 N/mm<sup>2</sup>

### Spindle with trapezoidal screw threads



### Available spindles

Thread size Ø	Pitch p	Thread pitch delay mm/on section	Outside Ø d mm	Core Ø d1 mm	Standard axial play	for linear actuator	available spindle lengths mm
T3.5x1	1.00	± 0,1 / 300 mm	3.50	2.30	0.03	L.....-T3.5x1	200, 300
T6x1	1.00	± 0,1 / 300 mm	6.00	4.70	0.03	L.....-T6x1	200, 300
T6x2 P1	2.00	± 0,1 / 300 mm	6.00	4.70	0.03	L.....-T6x2	200, 300
T5x5	5.00	± 0,1 / 300 mm	5.40	3.60	0.10	L.....-T5x5	200, 300
T10x2	2.00	± 0,1 / 300 mm	9.70	8.20	0.06	L.....-T10x2	200, 300